



Pollution Control Services Department

Bob Allen

May 9, 2012

# Harris County Pollution Control History

- Harris County Health Department - Stream and Air Pollution Control Section (1953)
- Harris County Pollution Control Department (1971)
- Public Health & Environmental Services Pollution Control Division (1998)
- Environmental Public Health Division (2006)
- Pollution Control Services Department (2011)

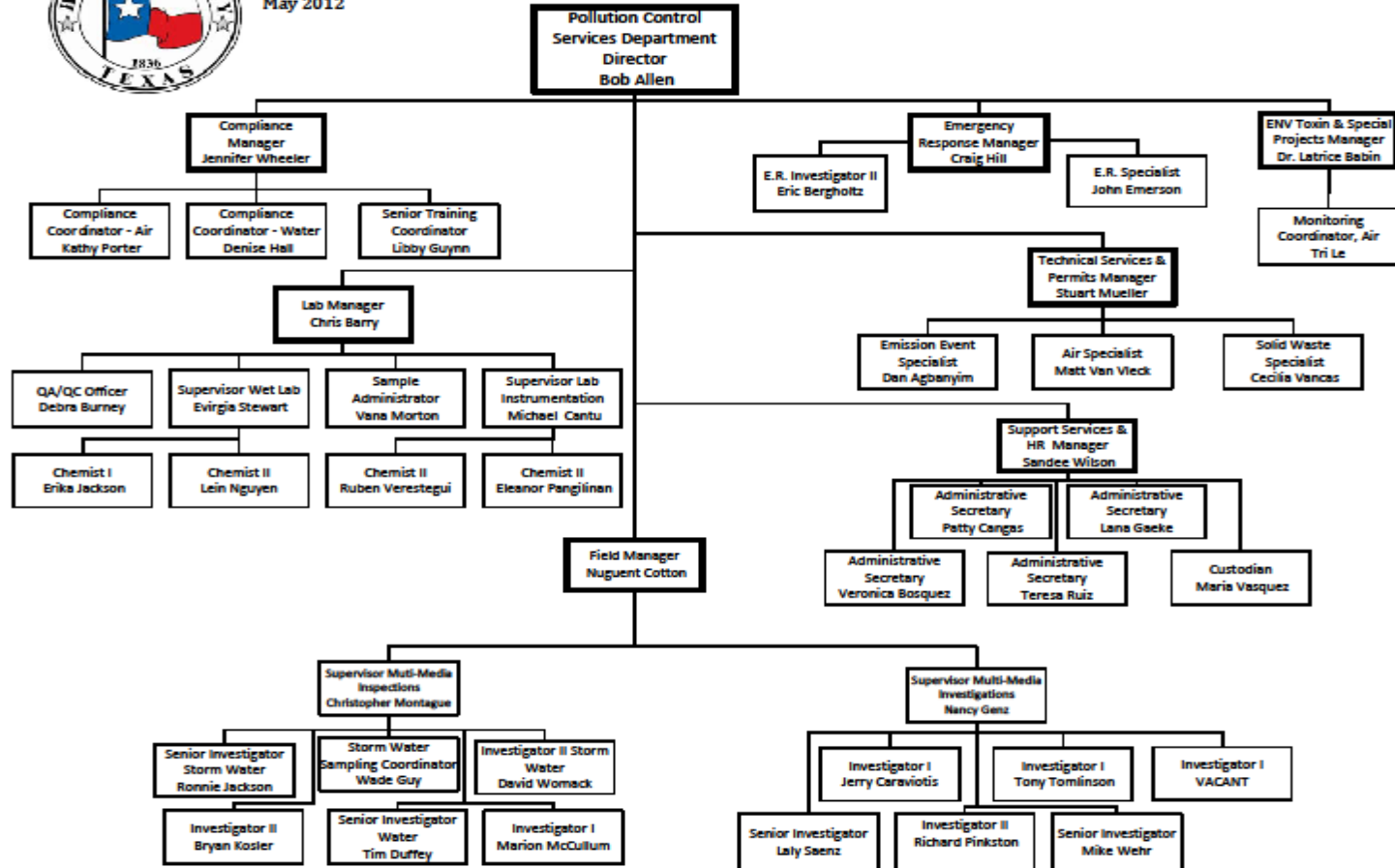
# Pollution Control Core Functions

- Respond to Citizen Complaints
- Wastewater surveillance
  - plant discharges STP/IND, storm water runoff
  - Storm water permit compliance
- Solid waste investigation and inspection
- Surface water surveillance
- TCEQ proposed permits and rule making
- Regulatory assistance for Harris County precincts and departments
- Emission Event investigation
- Emergency Response
- SEP project oversight

# PCS Organization Chart



**Pollution Control Services Department**  
 Organization Chart  
 May 2012



# Enforcement Statistics - 2011

## Complaints

- Air related-482
- Water related-366
  - 22 Industrial water
- Solid waste -307
- Other - 49

## Cases Forwarded

- County Attorney- 75/13 subjects
- District Attorney-7/5

## Violation Notices

- 150 air violations
- 359 water violations
  - 22 Industrial water
- 107 solid waste
- 18 other

## Penalties/fines

- Civil penalties \$1,020,184
- Criminal \$6,000

# Investigation and Enforcement Process

- Investigation Report-Notice of Violation issued
- Enforcement Coordinator/Enforcement Criteria review
  - Options?
  - -Resolved, hold for recheck, request more info
  - -Request you come in to meet via letter
- County Attorney or District Attorney? Which one?
  - -Notice by mail that your Case has been forwarded to County Attorney or District Attorney

# Once case is forwarded (Civil)

## Options?

- TRO
- Temporary injunction
  - -Agreed or proceed with trial
- Mediation
- Permanent Injunction
  - -Agreed or proceed to trial

# Factors in Considering Civil or Criminal Enforcement

- Did subject knowingly and intentionally violate the law?  
Or is it a strict liability offense?
- Criminal negligence, degree of harm
- Are substantial operational changes needed?
- Are there permit issues that need resolution?



# Contact Information

Bob Allen

Director

Bob.Allen@pcs.hctx.net

(713) 274-6416

General Number

(713) 920-2831

emissionsevent@pcs.hctx.net or e-Fax at 713-437-4368.